

F

DEMO SUPPLY LINE FROM AND INCLUDING THE STRAINER TO THE EXISTING AIR SEPARATOR. SEE PHOTO 2 & 3.



DEMO THROUGH STRAINER ON SUPPLY LINE

DEMO BYPASS

REMOVE EXISTING CONTROL VALVE AND TURN OVER TO OWNER. REPLACE WITH NEW 6" PIPE FROM THIS POINT.



DEMO SUPPLY LINE TO EXISTING AIR SEPARATOR



E

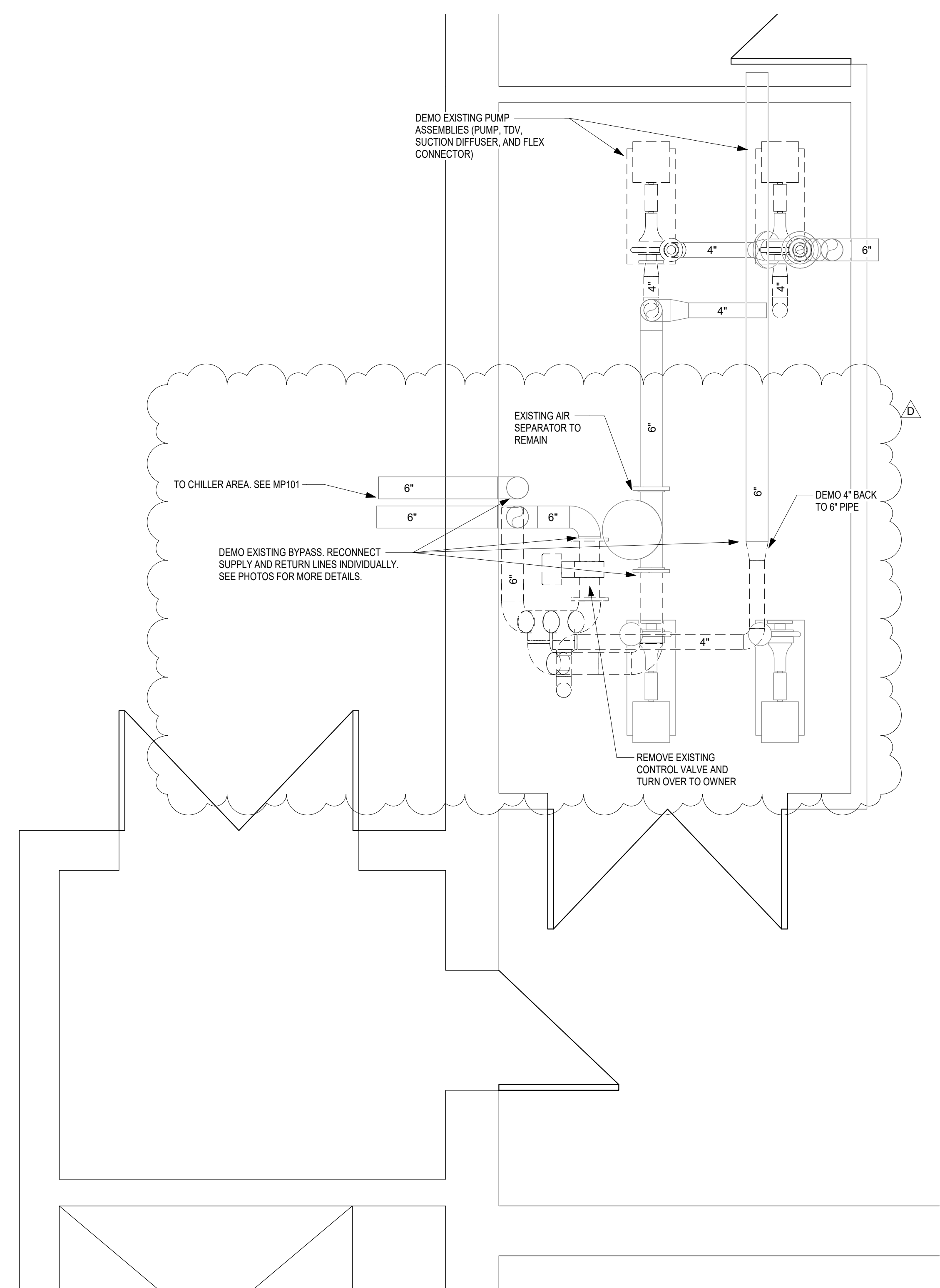
DEMO RETURN LINE AS REQUIRED TO RECONNECT BEFORE BYPASS.

PICTURE 1: BYPASS

PICTURE 2: STRAINER

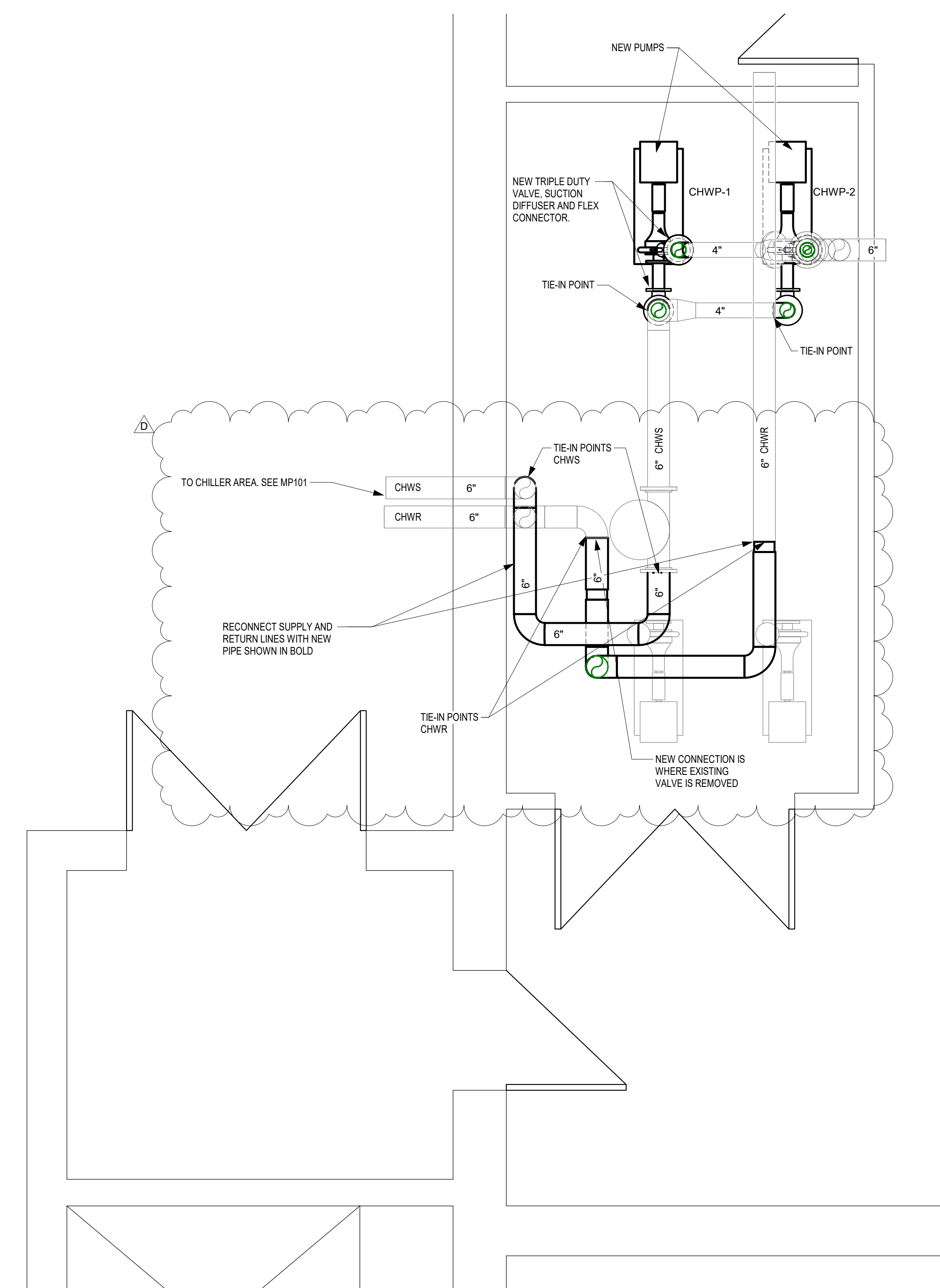
PICTURE 3: AIR SEPARATOR

D



2 MECHANICAL ROOM DEMO PLAN
1/2" = 1'-0"

ADDED NOTES TO PLANS NO CHANGES IN SCOPE



1 MECHANICAL ROOM PLAN
1/2" = 1'-0"

C

B

A

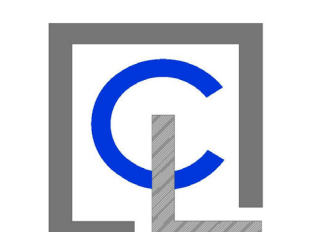
CRAIG GAULDEN DAVIS

Architecture
Planning
Interiors
19 Washington Park
Greenville, SC 29601
Phone 864.242.0761
Fax 864.501.9945
E-mail ogd@cgdarch.com

COPYRIGHT © 2020 CAVINESS LAMBERT ENGINEERING, LLC. ALL RIGHTS RESERVED

THIS COPYRIGHTED DOCUMENT AND ALL INFORMATION CONTAINED HEREIN IS AN INSTRUMENT OF SERVICE AND SHALL NOT BE REPRODUCED, ALTERED, OR REUSED IN PART OR IN WHOLE WITHOUT PRIOR WRITTEN PERMISSION FROM THE ENGINEER. THIS DRAWING IS THE EXCLUSIVE PROPERTY OF THE ENGINEER AND MUST BE RETURNED UPON REQUEST.

CAVINESS LAMBERT ENGINEERING



MECHANICAL/ELECTRICAL/PLUMBING
508 East North Street
Greenville, SC 29601



GREENVILLE - BLDG. 112 AIR COOLED CHILLER ADDITION

Project No.: H59-N054-FW

DATE	MARK	DESCRIPTION
10/02/2020	B	ISSUED FOR REVIEW
1/15/2021	C	CONSTRUCTION
2/26/2021	D	ADDENDUM NO. 1

ISSUE:	CONSTRUCTION
DATE:	1/15/2021
PROJECT NO.:	120047.015
DRAWN BY:	CTL
CHECKED BY:	JAC

MECHANICAL PIPING PLAN

MP102

GTC Bldg 112_MEP20_detached.rvt
2/26/2021 4:26:19 PM